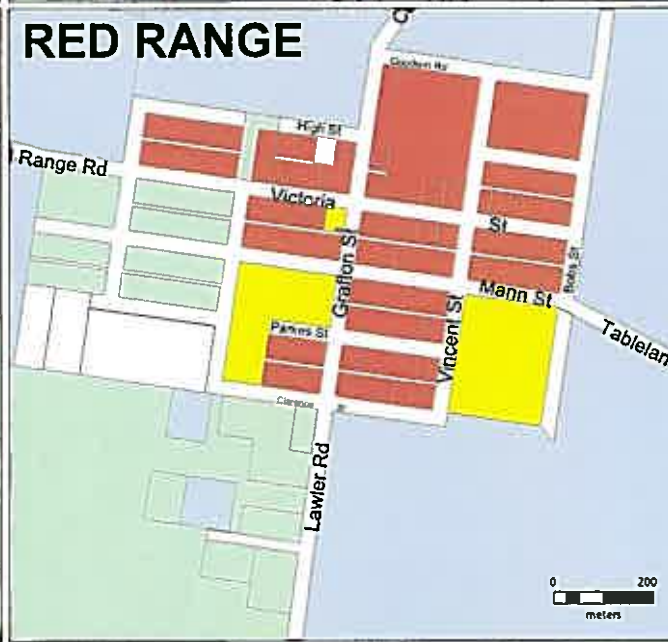
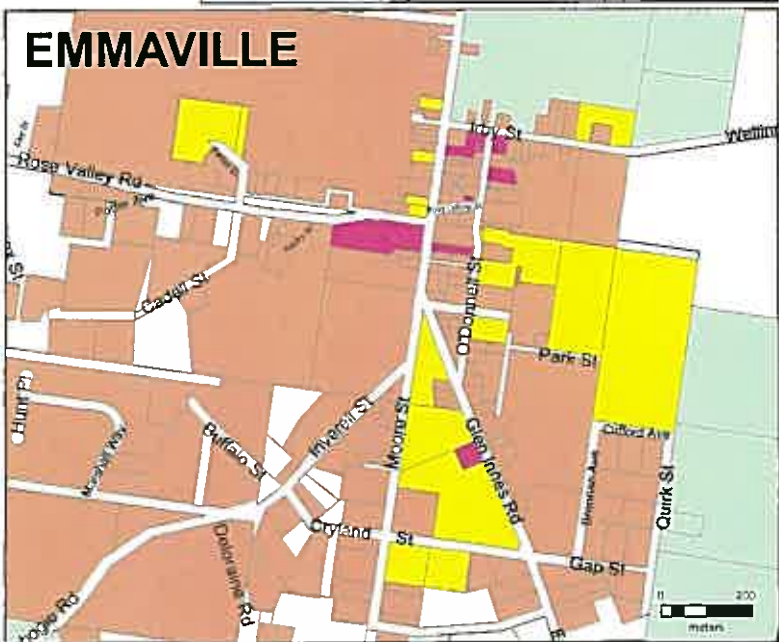
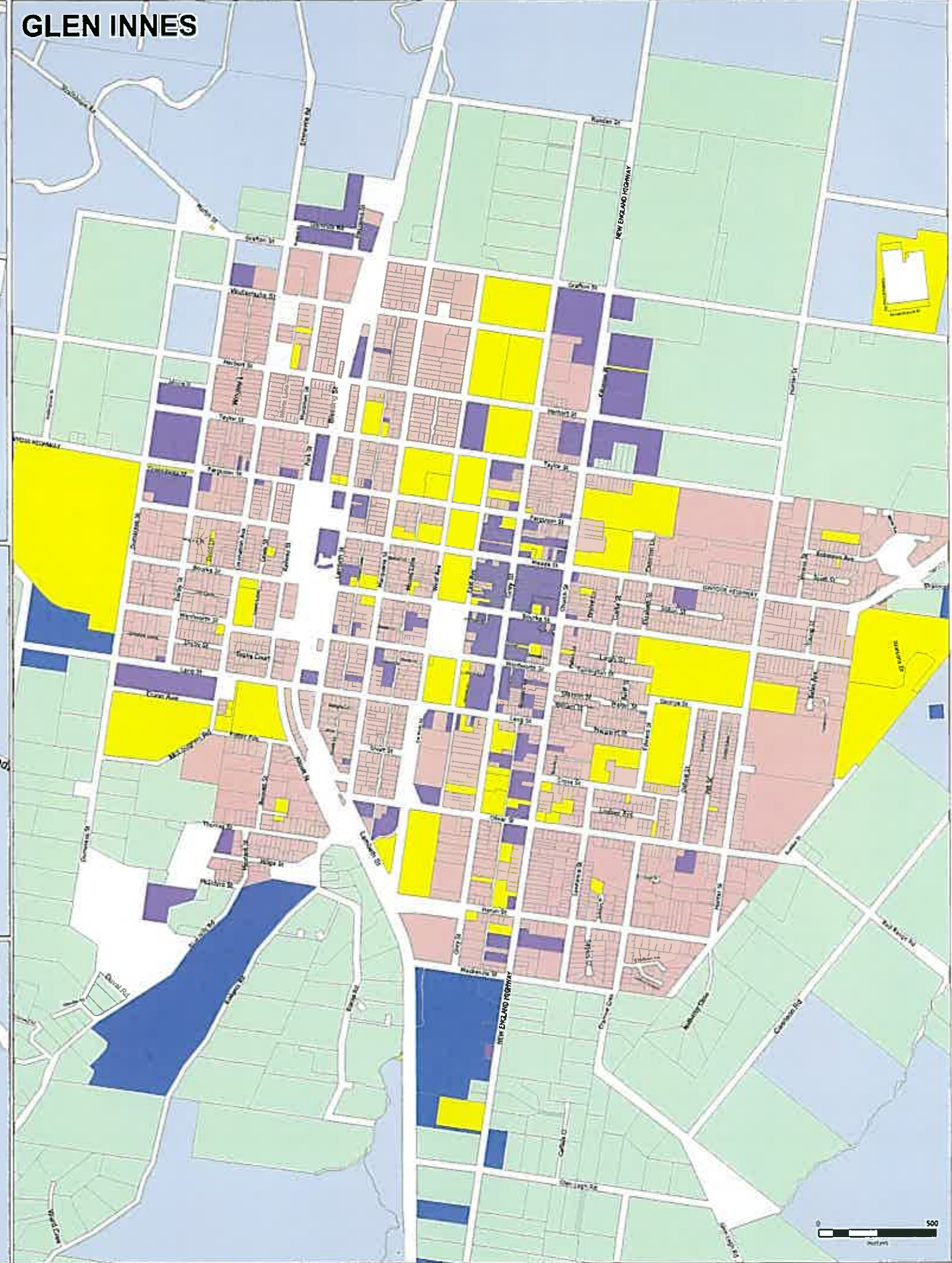
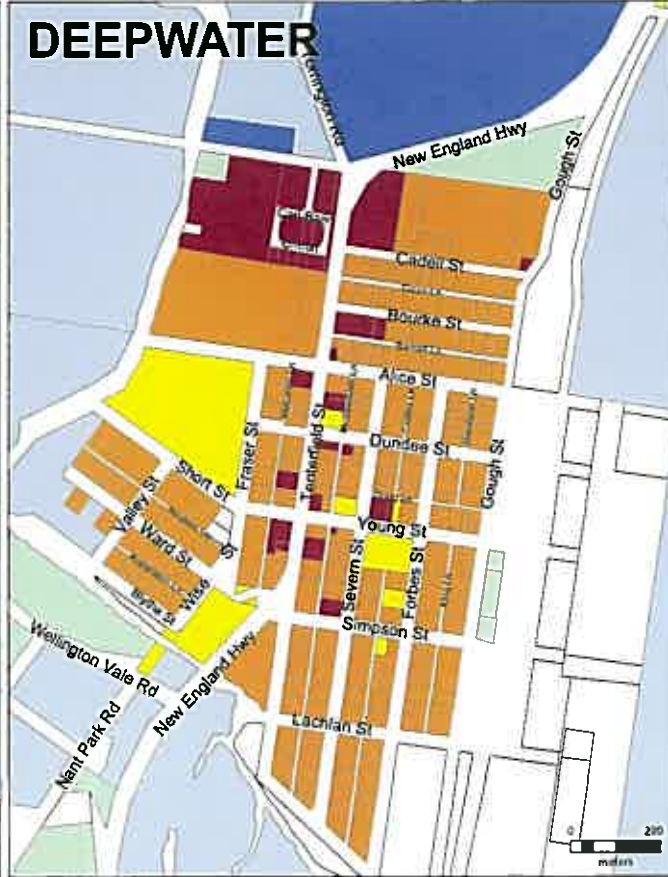
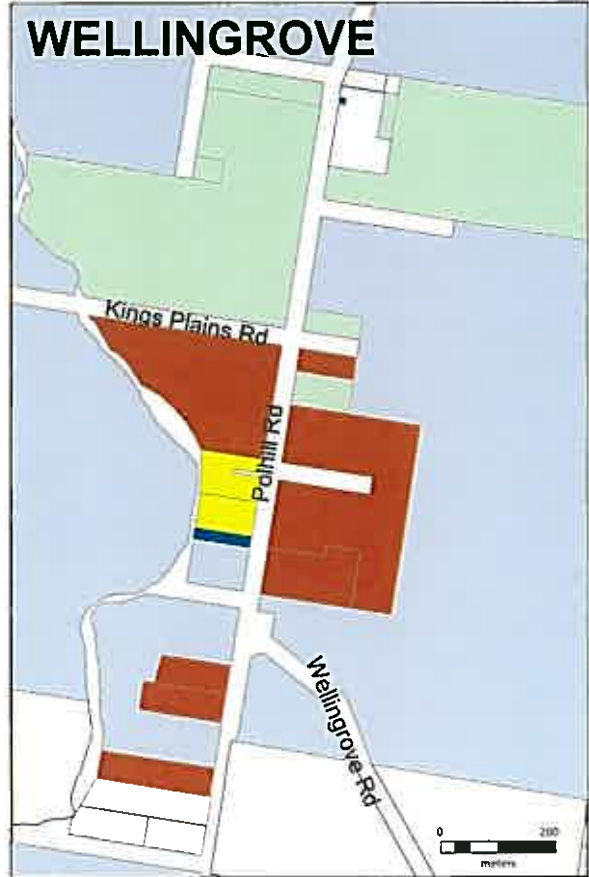




- Rating Categories**
- Farmland
 - Business Non-Urban
 - Residential Non-Urban
 - Business Deepwater
 - Residential Deepwater
 - Business Dundee
 - Residential Dundee
 - Business Emmanville
 - Residential Emmanville
 - Business Glen Innes
 - Residential Glen Innes
 - Business Glencoe
 - Residential Glencoe
 - Business Red Range
 - Residential Red Range
 - Business Wellinggrove
 - Residential Wellinggrove
 - Unmatched
 - Mining
 - Other Non-Rateable
- Non-Rateable**
- State Forest
 - National Park
 - Nature Reserve



Rating Categories: Shire

Rating Categories

- Farmland
- Business: Non Urban
- Residential: Non Urban
- Business: Deepwater
- Residential: Deepwater
- Business: Dundee
- Residential: Dundee
- Business: Emmaville
- Residential: Emmaville
- Business: Glen Innes
- Residential: Glen Innes
- Business: Glencoe
- Residential: Glencoe
- Business: Red Range
- Residential: Red Range
- Business: Wellingrove
- Residential: Wellingrove
- Unmatched
- Mining
- Other Non-Rateable

Non-Rateable

- State Forest
- National Park / Nature Reserve



Disclaimer: The purpose of this plan is to show the general arrangement of allotments and/or Council assets. Glen Innes Sevier Council accept no responsibility for any loss or damage suffered howsoever arising to any person or corporation who may rely on information contained within this plan. This plan is not to scale. Dimensions, areas and annotation shown on this plan are approximate only and may vary. Assessments that are levied as both 'Farm Land' and renewable energy related. *Business: Non-Urban' are shown as 'Farm Land' if spatial data is not available.



Last updated 31 March 2017

